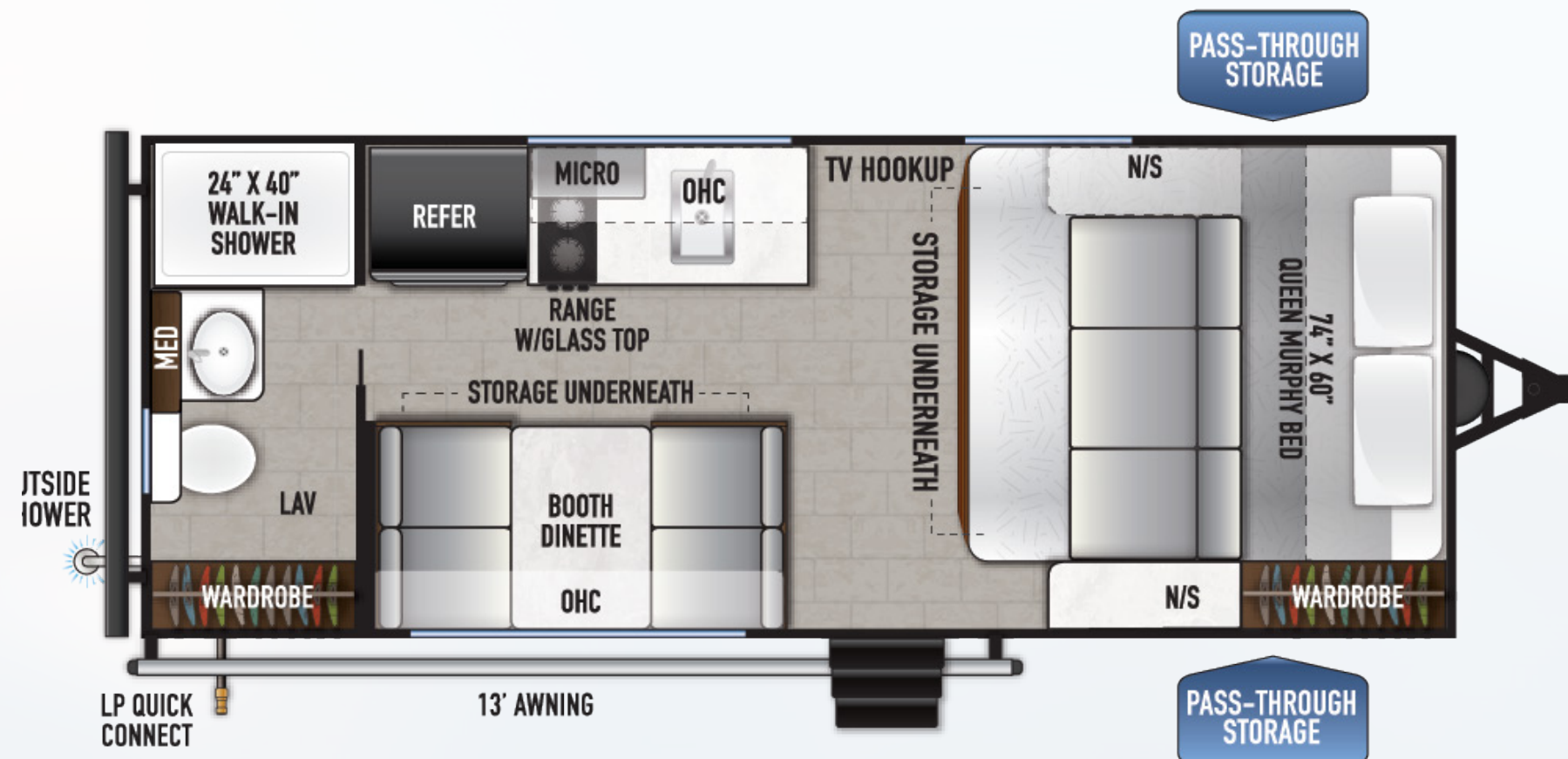


# Silver Lake

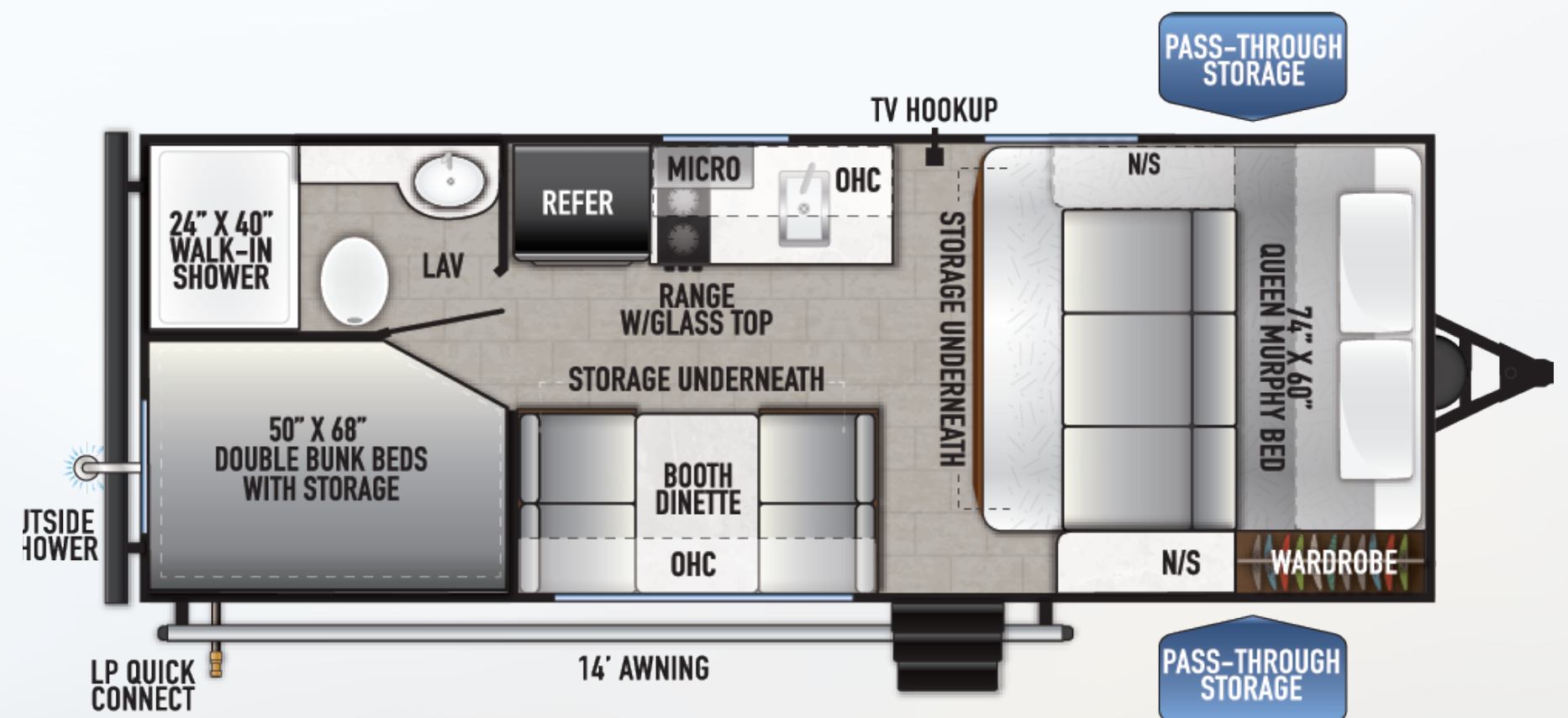
## TRAVEL TRAILERS

### 16 RBLE



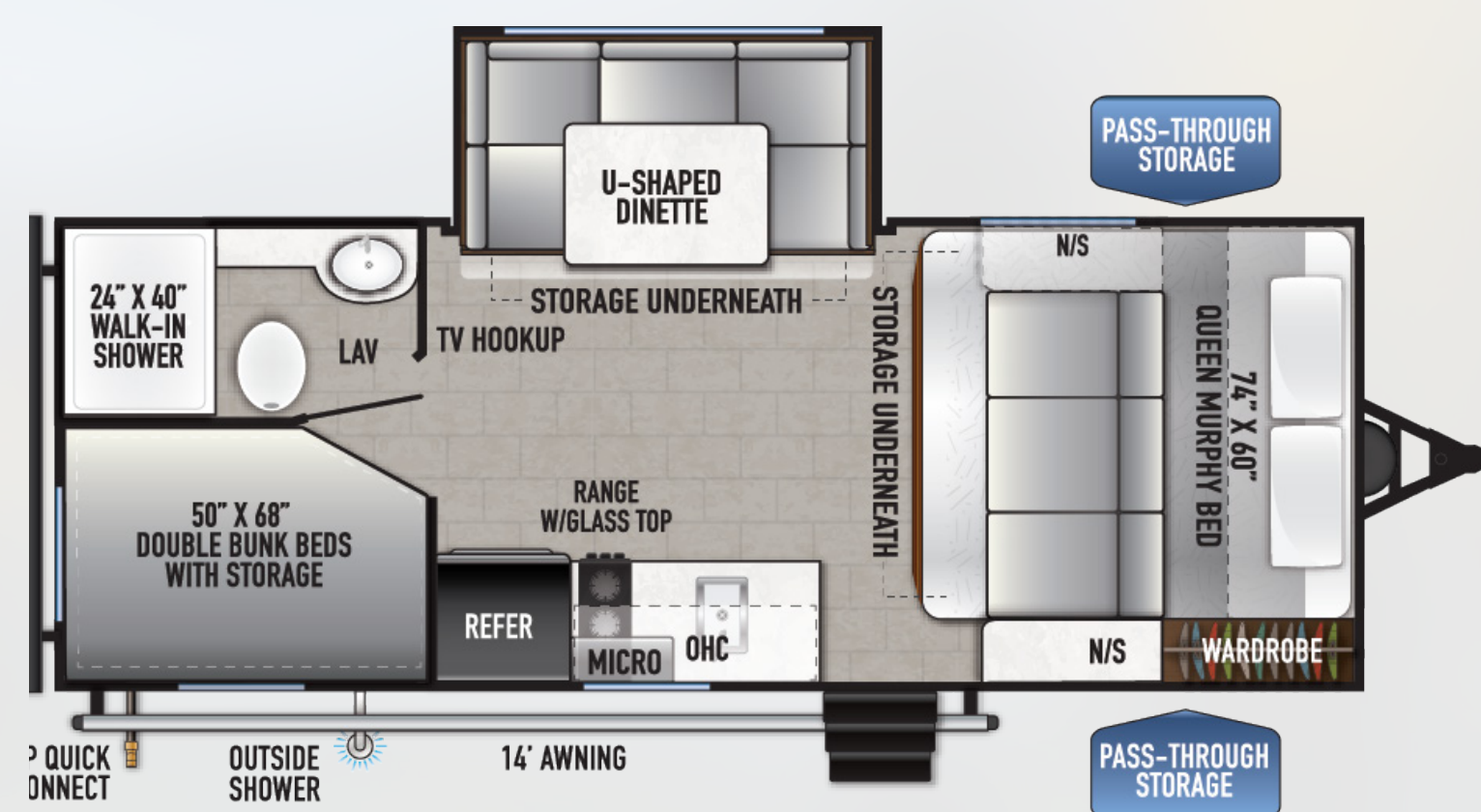
DRY HITCH (LBS.): 555    UVW (LBS.): 3,584    LENGTH W/ HITCH: 21' 3"

### 17 BHLE



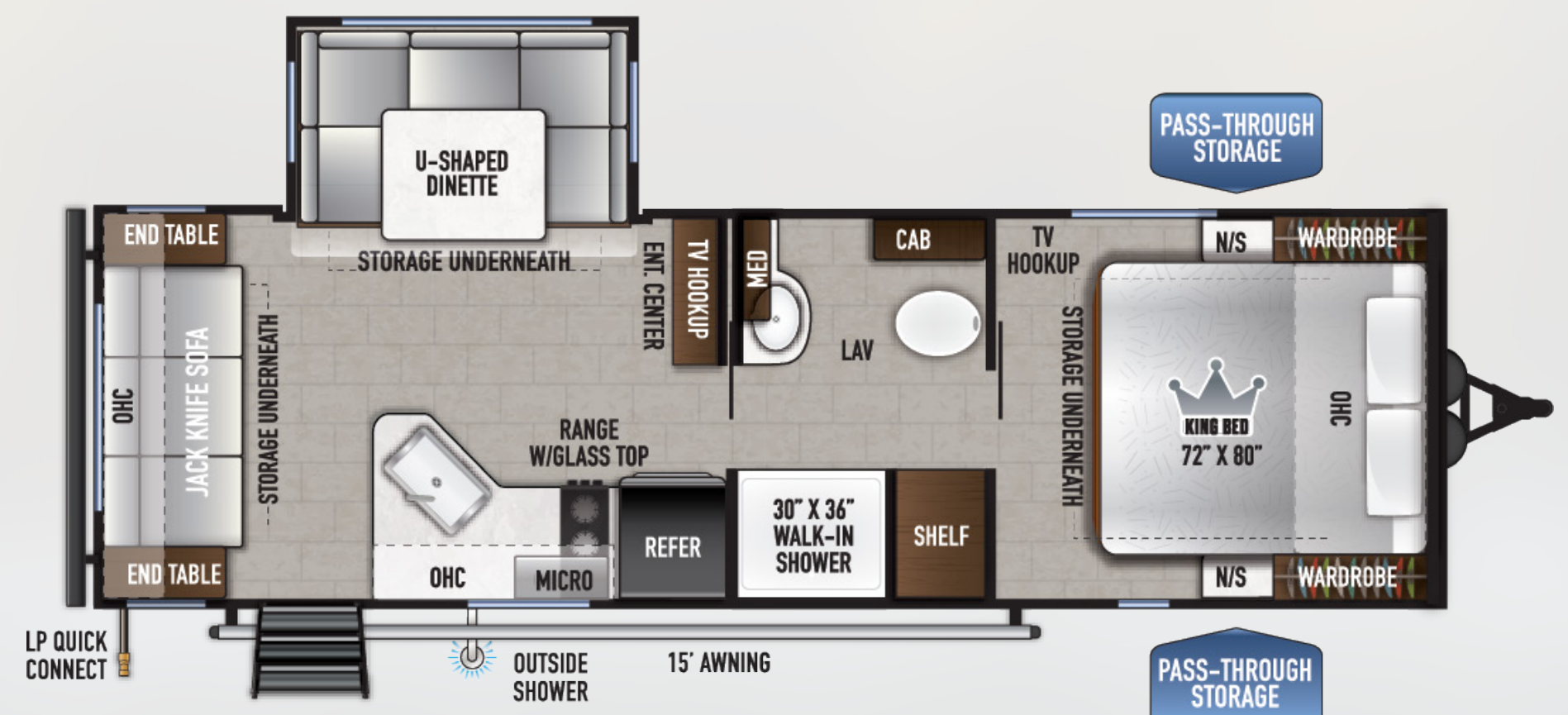
DRY HITCH (LBS.): 555    UVW (LBS.): 3,884    LENGTH W/ HITCH: 22' 5"

### 18 BHLE



DRY HITCH (LBS.): 565    UVW (LBS.): 4,354    LENGTH W/ HITCH: 23' 0"

### 24 RLLE



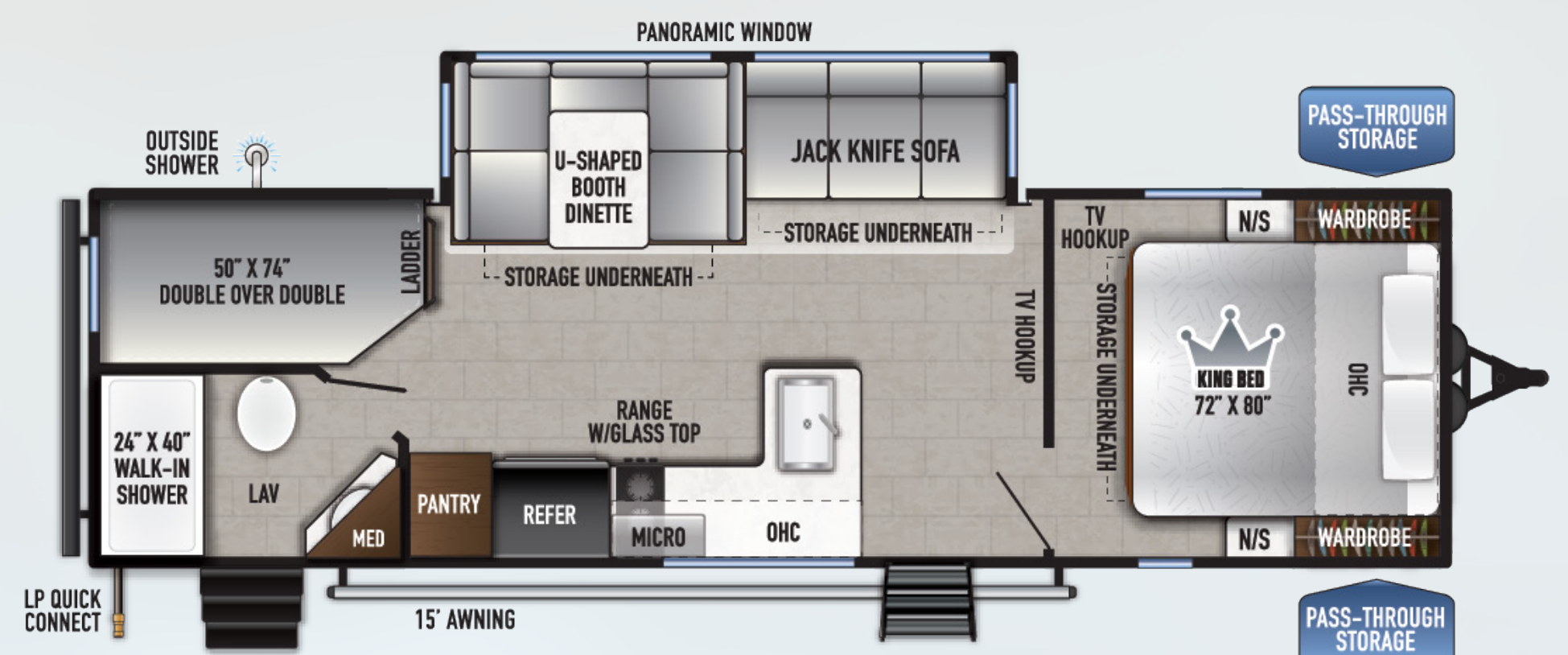
DRY HITCH (LBS.): 575    UVW (LBS.): 5,148    LENGTH W/ HITCH: 28' 10"

### 25 BHLE



DRY HITCH (LBS.): 575    UVW (LBS.): 4,723    LENGTH W/ HITCH: 28' 7"

### 26 BHLE



DRY HITCH (LBS.): 640    UVW (LBS.): 5,993    LENGTH W/ HITCH: 31' 8"

**EAST TO WEST**



**FREE MEMBERSHIP**  
to Forest River Owners' Group  
[www.forestriverfrog.com](http://www.forestriverfrog.com)



3000 CR 6 W | ELKHART, IN 46514 | 574.264.6664 | [WWW.EASTTOWESTRV.COM](http://WWW.EASTTOWESTRV.COM)

All information contained in this brochure is believed to be accurate at the time of publication. However, during the model year, it may be necessary to make revisions and Forest River, Inc., reserves the right to make all such changes without notice, including prices, colors, materials, equipment and specifications as well as the addition of new models and the discontinuance of models shown in this brochure. Therefore, please consult with your Forest River dealer and confirm the existence of any materials, design or specifications that are material to your purchase decision. 2023.01.17 ©2023 East To West, Inc. a Division of Forest River, Inc., a Berkshire Hathaway Company. All Rights Reserved.

For More Specifications  
Please Scan the QR Code