



Della Terra



Della Terra

TRAVEL TRAILERS



www.easttowestrv.com/della-terra
A DIVISION OF FOREST RIVER





EXPLORE COMFORT PACKAGE (MANDATORY)

- 48" Dinette with pull-out storage drawers on roller guides *some models*
- Built-In Fireplace (251RD, 241BH, 261RB, 262BH, 263RK, 312BH)
- USB Charging Stations *some models*
- Washer/Dryer Prep (261RB, 262BH, 263RK, 272RL, 312BH)
- Residential Inspired Linoleum Flooring
- Window Valance Package
- 3-Burner Range
- B/T Rechargeable Sound System
- Camp Kitchen (241BH, 262BH, 312BH)
- Seamless Designer Countertops
- Headboard In Main Bedroom
- Porcelain Foot Flush Toilet
- 81" Interior Ceiling Height
- 12V Refrigerator
- Solid Bedroom Door*
- Cable/Satellite Ready
- 35,000 BTU Furnace
- Interior LED Lights

ADVENTURE OUTDOOR PACKAGE (MANDATORY)

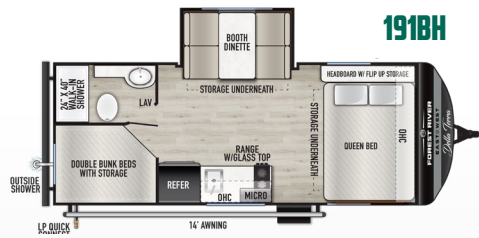
- Universal Docking Station with Battery Disconnect and Slide-Out Switch
- Oversized Exterior Arm Entry Handle
- 50-AMP Service with 2nd A/C Prep (251RD and Up)
- Manual Stabilizer Jacks with Power Jack Prep
- HDTV Antenna Wi-Fi Prep 4G LTE Prep
- Hot and Cold Outside Shower
- Tankless Water Heater with Bypass
- Power Tongue Jack with LED Light
- Power Awning with LED Lights
- Detachable Power Cord
- Backup Camera Prep
- LP Quick Connect
- Exterior LED Lights
- Solid Entry Steps
- Black Tank Flush
- Tinted Windows
- Solar Prep

BASE CAMP PACKAGE (MANDATORY)

- 15,000 BTU-Ducted A/C with Quick Cool
- Automotive Deposition Coated Frame
- Flush-Floor Slide-Outs (No Carpet)
- Upgraded Interior Design Package
- Magnetic Baggage Door Catches
- Heated and Enclosed Underbelly
- D-Ring for Dog Leashes
- Forced Air Heated and Enclosed Holding Tanks
- King Bed

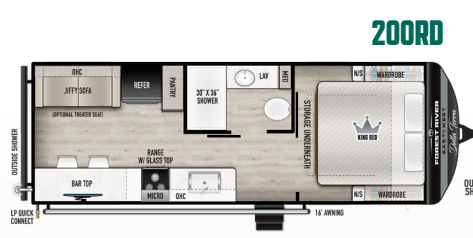
AVAILABLE OPTIONS

- Electric Power Stabilizer Jacks
- 40" Smart TV with Swingout Bracket (W/A)
- 200 Watt Solar Package with 30 Amp Controller
- 2nd AC (251RD, 261RB, 262BH, 263RK, 272RL, 312BH)
- Tri-Fold Sofa IPO Jackknife Sofa (251RD, 261RB, 262BH, 263RK, 272RL, 312BH)
- Theater Seating IPO Jackknife Sofa (200RD, 221ML, 251RD, 261RB, 262BH, 263RK, 272RL, 312BH)
- Free Standing Dinette IPO Booth (W/A)
- Spare Tire and Carrier
- Aluminum Wheels
- Queen Bed



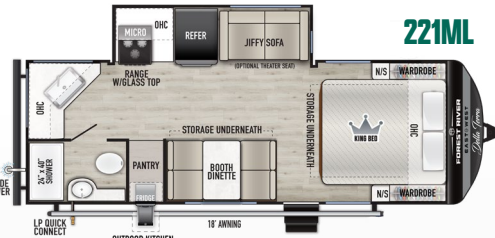
1918H

Hitch (LBS): **TBD** Ext. Length: **24'0"** Ext. Height: **11'3"**
 Ext.Width: **96"** UVW (LBS): **TBD**
 CCC (LBS): **TBD** Tanks - F/B/G - (GAL): **40/30/30**



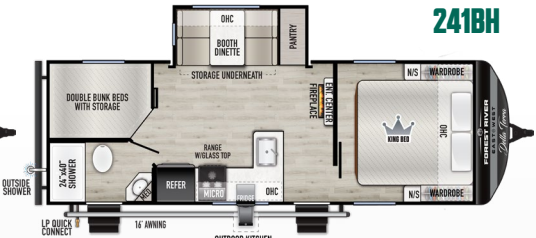
200RD

Hitch (LBS): **635** Ext. Length: **28'2"** Ext. Height: **11'3"**
 Ext.Width: **96"** UVW (LBS): **4,998 lb**
 CCC (LBS): **2,637** Tanks - F/B/G - (GAL): **40/30/30**



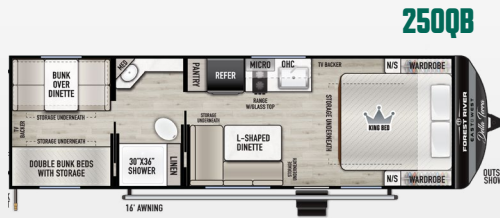
221ML

Hitch (LBS): **670** Ext. Length: **27'4"** Ext. Height: **11'3"**
 Ext.Width: **96"** UVW (LBS): **6,323 lb**
 CCC (LBS): **3,147** Tanks - F/B/G - (GAL): **40/30/30**



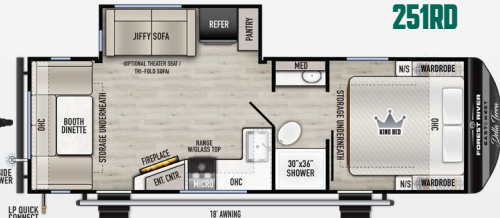
241BH

Hitch (LBS): **645** Ext. Length: **29'1"** Ext. Height: **11'3"**
 Ext.Width: **96"** UVW (LBS): **6,118**
 CCC (LBS): **3,327** Tanks - F/B/G - (GAL): **40/30/60**



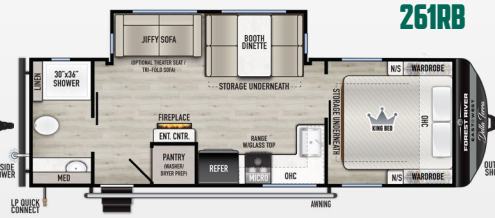
250QB

Hitch (LBS): **730** Ext. Length: **30'9"** Ext. Height: **11'3"**
 Ext.Width: **96"** UVW (LBS): **5,448**
 CCC (LBS): **2,282** Tanks - F/B/G - (GAL): **40/30/60**



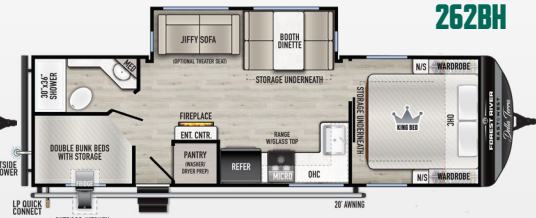
251RD

Hitch (LBS): **635** Ext. Length: **29'10"** Ext. Height: **11'3"**
 Ext.Width: **96"** UVW (LBS): **6,288**
 CCC (LBS): **3,147** Tanks - F/B/G - (GAL): **40/30/60**



261RB

Hitch (LBS): **775** Ext. Length: **30'6"** Ext. Height: **11'3"**
 Ext.Width: **96"** UVW (LBS): **6,473**
 CCC (LBS): **3,102** Tanks - F/B/G - (GAL): **40/30/60**



262BH

Hitch (LBS): **820** Ext. Length: **31'11"** Ext. Height: **11'3"**
 Ext.Width: **96"** UVW (LBS): **7,043**
 CCC (LBS): **2,577** Tanks - F/B/G - (GAL): **40/30/60**



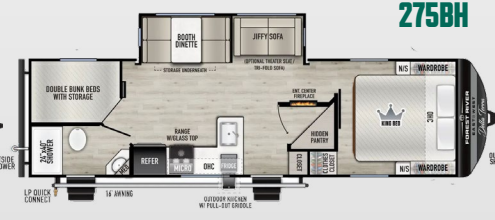
263RK

Hitch (LBS): **780** Ext. Length: **31'10"** Ext. Height: **11'3"**
 Ext.Width: **96"** UVW (LBS): **7,243**
 CCC (LBS): **2,337** Tanks - F/B/G - (GAL): **40/30/90**



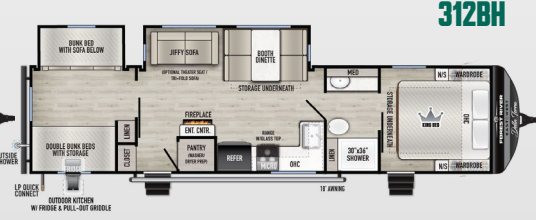
272RL

Hitch (LBS): **835** Ext. Length: **34'0"** Ext. Height: **11'3"**
 Ext.Width: **96"** UVW (LBS): **7,963**
 CCC (LBS): **1,672** Tanks - F/B/G - (GAL): **40/30/60**



275BH

Hitch (LBS): **TBD** Ext. Length: **32'7"** Ext. Height: **TBD**
 Ext.Width: **96"** UVW (LBS): **6,798**
 CCC (LBS): **2,952** Tanks - F/B/G - (GAL): **40/30/60**



312BH

Hitch (LBS): **935** Ext. Length: **38'0"** Ext. Height: **11'3"**
 Ext.Width: **96"** UVW (LBS): **8,623**
 CCC (LBS): **2,712** Tanks - F/B/G - (GAL): **40/30/60**

DELLA TERRA LE VALUE PACKAGE

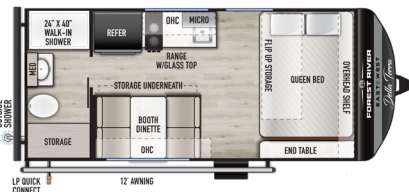
On-the-Go Ladder Prep
 Slide-Out Awning Prep
 Cable/Satellite Ready
 Friction Hinged Entry Doors
 Motion Sensor Lights (W/A)
 19,000 BTU Furnace
 Shower Surround
 8,000 BTU A/C
 2 Burner Stove
 Black Tank Flush
 CPAP Storage

USB Charging Stations (Beds, Bunks & Tables)*
 Roof-Mounted Solar Prep with Controller Pre-Wire
 Power Awnning with Adjustable Legs
 Exterior LED Light Strip Under Awning
 Seamless Countertops (No T-Mold)
 Back Up Camera Prep
 Outside Hot/Cold Shower
 81" Interior Ceiling Height

LE AVAILABLE OPTIONS

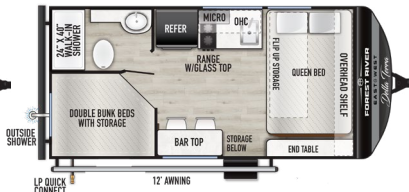
Spare Tire and Carrier
 200 Watt Solar Package with 30 Amp Controller

160RBXLE



Hitch (LBS): **340** Ext. Length: **21'0"**
 Ext. Height: **10'3"** Ext.Width: **96"** UVW (LBS): **3,518**
 CCC (LBS): **1,222** Tanks - F/B/G - (GAL): **40/30/30**

170BHXLE



Hitch (LBS): **385** Ext. Length: **21'0"**
 Ext. Height: **10'3"** Ext.Width: **96"** UVW (LBS): **3,513**
 CCC (LBS): **1,272** Tanks - F/B/G - (GAL): **40/30/30**

165 BHXLE



Hitch (LBS): **TBD** Ext. Length: **TBD**
 Ext. Height: **TBD** Ext.Width: **TBD** UVW (LBS): **TBD**
 CCC (LBS): **TBD** Tanks - F/B/G - (GAL): **TBD**



TRAVEL TRAILERS



TOY HAULERS



FIFTH WHEELS



MOTORHOMES

EAST TO WEST TAKES PRIDE IN OUR FIVE GUIDING PRINCIPLES AND OUR CORPORATE PHILOSOPHY
which focuses on people working together to create high quality, value-added products that deliver the ultimate RV experience.

Sustainable Manufacturing

An important objective to our strategy and operations is to implement economically sound manufacturing processes to reduce/recycle waste & conserve energy and natural resources.

Corporate & Social Responsibility

We foster a business environment in which we focus on and practice:

- Ethical Labor Practices
- Teamwork
- Philanthropy
- Volunteering

Culture & Values

We are a forward thinking company committed to fostering a culture of teamwork. By being transparent, we encourage our employees to think outside the box and make a difference!

Quality & Construction

Our team takes pride in each unit we build. Our manufacturing standards and point to point inspections ensure each EAST TO WEST brand is built to the same quality specifications every time.

Our Commitment

We strive to provide the highest quality products at the best possible price to our customers. We invite you to be a part of the EAST TO WEST family and we look forward to exceeding your expectations!

EACH NEW FOREST RIVER PURCHASE PROVIDES:

- ✓ Pre-delivery Inspection.
- ✓ Digital Owner's Manual.
- ✓ Free Membership to Forest River Owners Group (FROG).
Learn more at www.forestriverfrog.com.
- ✓ A Contribution to Care Camps Foundation www.carecamps.org.
- ✓ 1 Year Free Roadside Assistance from Date of Purchase.



SPEC DEFINITIONS:

Scan on your smartphone to learn RV terminology and more!



LEARN MORE:

Scan this QR code with your mobile device to learn more about Forest River.



YOUR **DELLA TERRA** DEALER