



Entrada



Entrada

MOTORHOMES



EastToWestRV.com/Entrada-M-Class
A DIVISION OF FOREST RIVER



EastToWestRV.com/Entrada
A DIVISION OF FOREST RIVER



Luxury Redefined. Adventure Unleashed.



TOP FEATURES

NPS Yamaha Pure Sine Wave inverter generator with remote and emergency pull start (N/A M-Class)

Azdel composite sidewall and slide box construction

FlexPower 4,000-watt generator (M-Class Only)

Apple CarPlay/Android Auto Ready (Ford Only)

15,000 BTU Ducted Main A/C with heat pump

Maxx Air fan with remote and rain sensor

Extra-large dinette storage drawers

Dicor DiFlex II TPO roof membrane

60" x 80" cab-over-bunk mattress

Slide-out awning toppers

Tankless water heater

12V USB charge ports

30,000 BTU Furnace

Integrated entry step

Outdoor shower

2nd A/C Prep

Inverter prep

UNMATCHED POWER. UNCOMPROMISED COMFORT.

Redefining comfort and convenience in motorhomes, our models set a new standard with advanced climate control. Every main A/C unit is 15,000 BTU, equipped with a heat pump and ducted throughout the unit. On select models we also include a 2nd 13,500 BTC A/C that will cool the bedroom.





AVAILABLE OPTIONS

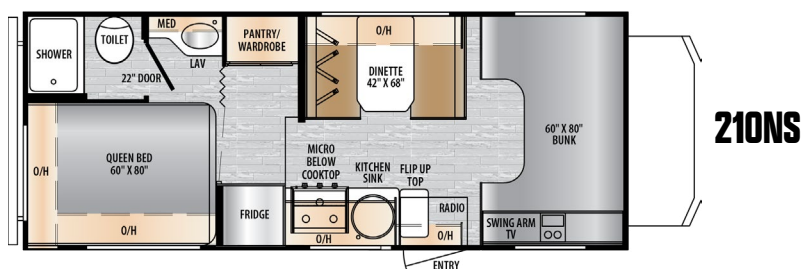
- Powered Theatre Seats (Select Models)
- Swivel Driver/Passenger Seats (Ford & Chevy, Standard on M-Class)
- Standard Solar Package (All Models)
- Hydraulic Leveling (Ford & M-Class Only)

CHEVROLET

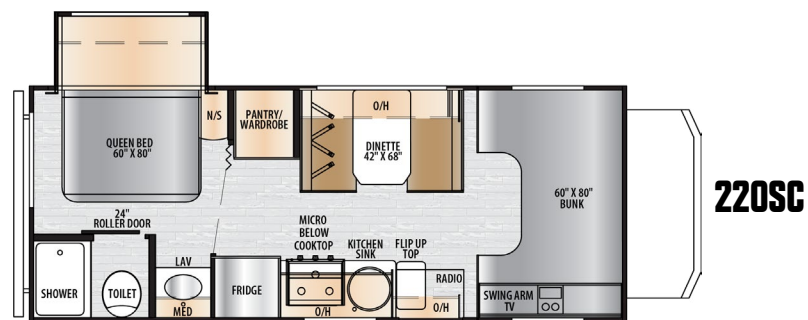
401 horsepower with 464 lb./ft. of torque

6-speed automatic transmission

6.6L V8 engine



Chassis: Chevy Express 3500 Engine: 6.6L V-8 Engine Fuel Type: Gas
Horsepower: 401 Torque: 464 lb/ft Hitch Rating (lbs): 5,000 GVWR (lbs): 12,300 CCC (lbs): 2119*
Awning Length: 15' Ext. Length: 24'4" Ext. Height: 11'3" Ext. Width: 101" Tanks - F/B/G - (GAL): 35/39/39
Fuel Tank (gal): 57 LP Tank (lbs): 40 Generator Size: 4500watt Gen Fuel: Gas



Chassis: Chevy Express 3500 Engine: 6.6L V-8 Engine Fuel Type: Gas
Horsepower: 401 Torque: 464 lb/ft Hitch Rating (lbs): 5,000 GVWR (lbs): 12,300 CCC (lbs): 2302*
Awning Length: 14' Ext. Length: 23'10" Ext. Height: 11'3" Ext. Width: 101" Tanks - F/B/G - (GAL): 35/32/27
Fuel Tank (gal): 57 LP Tank (lbs): 40 Generator Size: 4500watt Gen Fuel: Gas

SOLAR OVERVIEW

Experience unparalleled freedom and superiority with Entrada Solar. Designed to elevate your camping lifestyle, this premium solar system ensures uninterrupted performance for 12V-powered essentials like your refrigerator, TV and interior lighting. At its core, a 200-watt Monocrystalline solar panel and 30-amp charge controller with LED display work seamlessly to maintain optimal battery health, extending lifespan, enhancing efficiency and protecting your investment.

Discover the Entrada Solar difference and power your journey with confidence and class.

200-watt Monocrystalline Solar Panel

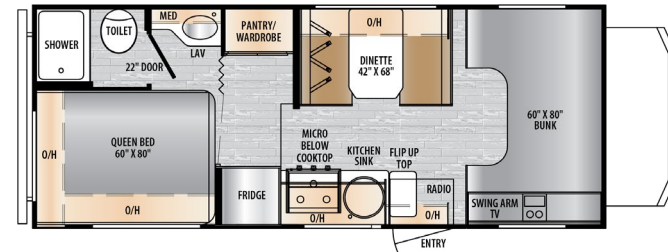
30-amp Charge Controller w/ LED Display

(2) 12V Batteries Installed in Step-well

FORD

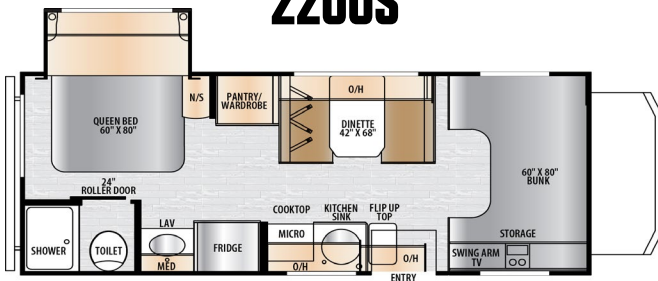
6-Speed Ford TorqShift automatic transmission
325 horsepower with 468 lb./ft. of torque
7.3L V8 Engine

2000NS



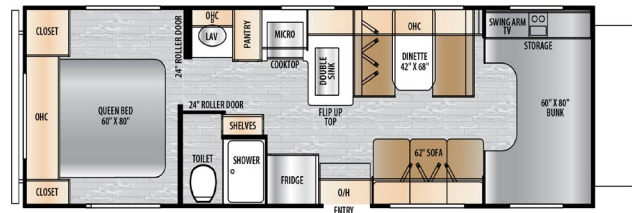
Chassis: **Ford E-350** Engine: **7.3L V-8** Engine Fuel Type: **Gas**
Horsepower: **325** Torque: **450 lb/ft** Hitch Rating (lbs): **5,000**
GVWR (lbs): **12,500** CCC (lbs): **TBD** Awning Length: **15'** Ext. Length: **TBD**
Ext. Height: **11'3"** Ext.Width: **101"** Tanks - F/B/G - (GAL): **35/TBD/TBD**
Fuel Tank (gal): **55** LP Tank (lbs) **40** Generator Size: **4500watt** Gen Fuel: **Gas**

2200S



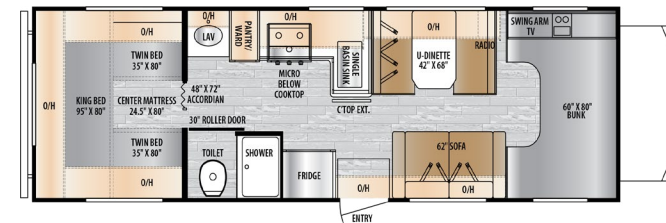
Chassis: **Ford E-350** Engine: **7.3L V-8** Engine Fuel Type: **Gas**
Horsepower: **325** Torque: **450 lb/ft** Hitch Rating (lbs): **5,000**
GVWR (lbs): **12,300** CCC (lbs): **1980*** Awning Length: **14'** Ext. Length: **23'10"**
Ext. Height: **11'3"** Ext.Width: **101"** Tanks - F/B/G - (GAL): **35/32/27**
Fuel Tank (gal): **55** LP Tank (lbs) **40** Generator Size: **4500watt** Gen Fuel: **Gas**

2700NS



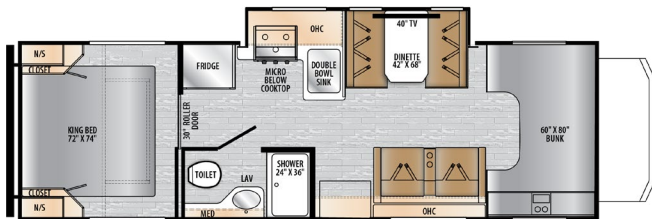
Chassis: **Ford E-450** Engine: **7.3L V-8** Engine Fuel Type: **Gas**
Horsepower: **325** Torque: **450 lb/ft** Hitch Rating (lbs): **7,500**
GVWR (lbs): **14,500** CCC (lbs): **3223*** Awning Length: **20'** Ext. Length: **29'11"**
Ext. Height: **11'3"** Ext.Width: **101"** Tanks - F/B/G - (GAL): **35/32/32**
Fuel Tank (gal): **55** LP Tank (lbs) **40** Generator Size: **4500watt** Gen Fuel: **Gas**

2710NK



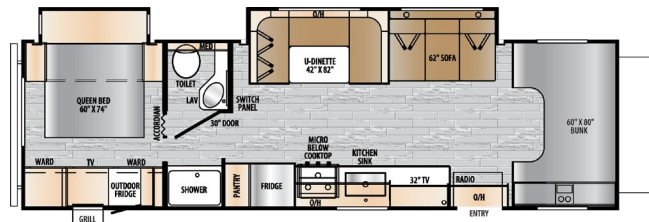
Chassis: **Ford E-350** Engine: **7.3L V-8** Engine Fuel Type: **Gas**
Horsepower: **325** Torque: **450 lb/ft** Hitch Rating (lbs): **5,000**
GVWR (lbs): **12,500** CCC (lbs): **1493*** Awning Length: **20'** Ext. Length: **29'11"**
Ext. Height: **11'3"** Ext.Width: **101"** Tanks - F/B/G - (GAL): **35/32/32**
Fuel Tank (gal): **55** LP Tank (lbs) **40** Generator Size: **5500watt** Gen Fuel: **Gas**

2800S



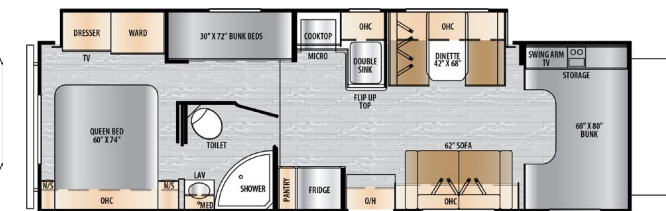
Chassis: **Ford E-350** Engine: **7.3L V-8** Engine Fuel Type: **Gas**
Horsepower: **325** Torque: **450 lb/ft** Hitch Rating (lbs): **5,000**
GVWR (lbs): **TBD** CCC (lbs): **TBD** Awning Length: **TBD** Ext. Length: **TBD**
Ext. Height: **TBD** Ext.Width: **TBD** Tanks - F/B/G - (GAL): **TBD**
Fuel Tank (gal): **TBD** LP Tank (lbs) **TBD** Generator Size: **TBD** Gen Fuel: **TBD**

29500K



Chassis: **Ford E-450** Engine: **7.3L V-8** Engine Fuel Type: **Gas**
Horsepower: **325** Torque: **450 lb/ft** Hitch Rating (lbs): **7,500**
GVWR (lbs): **14,500** CCC (lbs): **1908*** Awning Length: **16'** Ext. Length: **32'3"**
Ext. Height: **11'4"** Ext.Width: **101"** Tanks - F/B/G - (GAL): **35/32/32**
Fuel Tank (gal): **55** LP Tank (lbs) **40** Generator Size: **5500watt** Gen Fuel: **Gas**

3100FB



Chassis: **Ford E-450** Engine: **7.3L V-8** Engine Fuel Type: **Gas**
Horsepower: **325** Torque: **450 lb/ft** Hitch Rating (lbs): **7,500**
GVWR (lbs): **14,500** CCC (lbs): **1670*** Awning Length: **16'** Ext. Length: **32'6"**
Ext. Height: **11'4"** Ext.Width: **101"** Tanks - F/B/G - (GAL): **35/39/39**
Fuel Tank (gal): **55** LP Tank (lbs) **40** Generator Size: **5500watt** Gen Fuel: **Gas**

ENTRADA M-CLASS PACKAGE

Automotive-grade, full body paint with three exterior color options

One piece, molded fiberglass front cap with automotive windshield

Squared, frameless windows with integrated day/night shades

Upgraded luxury interior décor

Solid surface countertops

Upgraded luxury furniture



ENTRADA VALUE PACKAGE

Maximum towing capacity: 7500lb (E-450), 5000lb (E-350), 4200lb (Mercedes)

One piece, automotive painted, molded fiberglass front cap

Winegard Air 360+ antenna with integrated Wi-Fi prep

Backup and sideview camera system with monitor

RotoCast exterior storage compartments

Azdel composite sidewall construction

Power awning with LED light strip

Automotive painted front cap

Convection microwave oven

10.7 cu. ft. 12V refrigerator

Exterior LP quick connect

40" 12V Smart TV

12V tank heaters

Black Tank Flush

E-GEN SYSTEM OVERVIEW - M-CLASS ONLY

The cutting-edge E-Gen System, exclusive to our M-Class models, revolutionizes off-grid travel by replacing traditional generators with advanced technology. Powered by premium Victron components, the system includes a 3,000-watt MultiPlus II inverter/charger, a 50-amp MPPT SmartSolar charge controller, and a Cerbo GX for seamless system monitoring. Its robust 960Ah Lithium batteries, equipped with vertical heat conduction and CanBus connections, can expand to an impressive 1,440Ah capacity, ensuring unmatched energy storage. A second Acro-Zeus high-output alternator delivers 275 amps while driving and 150 amps at idle, keeping you powered wherever the road leads.

Premium Victron components include:

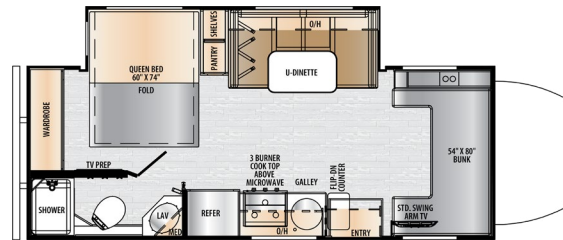
Easily expandable to 1,440ah battery capacity
50amp MPPT SmartSolar Charge Controller
3,000-Watt MultiPlus II Inverter-Charger
Second, high-output Arco-Zeus alternator charges at 275amps/Hwy, 150amps/Idle
960ah Lithium Batteries with vertical heat conduction and CanBus connections
Orion DC-DC Charger
Replaces Generator
Lynx Distributor
Cerbo GX



MERCEDES-BENZ

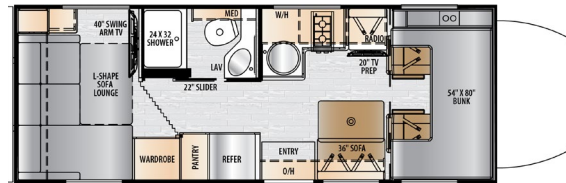
208 horsepower with 332 lb./ft. of torque
2.0L four-cylinder turbo-diesel engine
9 speed automatic transmission

24FM



Chassis: **Mercedes Benz 3500** Engine: **2.0L 4cyl Turbo Diesel**
Engine Fuel Type: **Diesel** DEF Tank : **6.6 gal** Horsepower: **208**
Torque: **332 lb/ft** Hitch Rating (lbs): **5,000** GVWR (lbs): **11,030**
CCC (lbs): **1435*** Awning Length: **16'** Ext. Length: **25'5"**
Ext. Height: **11'3"** Ext.Width: **95"** Tanks - F/B/G - (GAL): **35/32/32**
Fuel Tank (gal): **24** LP Tank (lbs) **80**
Generator Size: **400watt** Gen Fuel: **LP**

24RL



Chassis: **Mercedes Benz 3500** Engine: **2.0L 4cyl Turbo Diesel**
Engine Fuel Type: **Diesel** DEF Tank : **6.6 gal** Horsepower: **208**
Torque: **332 lb/ft** Hitch Rating (lbs): **5,000** GVWR (lbs): **11,030**
CCC (lbs): **1674*** Awning Length: **16'** Ext. Length: **25'5"**
Ext. Height: **11'3"** Ext.Width: **95"** Tanks - F/B/G (GAL): **35/32/32**
Fuel Tank (gal): **24** LP Tank (lbs) **80**
Generator Size: **400watt** Gen Fuel: **LP**

PAINT OPTIONS :



LUNAR RIDGE



ORION



TREELINE



TRAVEL TRAILERS



TOY HAULERS



FIFTH WHEELS



MOTORHOMES

EAST TO WEST TAKES PRIDE IN OUR FIVE GUIDING PRINCIPLES AND OUR CORPORATE PHILOSOPHY
which focuses on people working together to create high quality, value-added products that deliver the ultimate RV experience.

Sustainable Manufacturing

An important objective to our strategy and operations is to implement economically sound manufacturing processes to reduce/recycle waste & conserve energy and natural resources.

Corporate & Social Responsibility

We foster a business environment in which we focus on and practice:

- Ethical Labor Practices
- Teamwork
- Philanthropy
- Volunteering

Culture & Values

We are a forward thinking company committed to fostering a culture of teamwork. By being transparent, we encourage our employees to think outside the box and make a difference!

Quality & Construction

Our team takes pride in each unit we build. Our manufacturing standards and point to point inspections ensure each EAST TO WEST brand is built to the same quality specifications every time.

Our Commitment

We strive to provide the highest quality products at the best possible price to our customers. We invite you to be a part of the EAST TO WEST family and we look forward to exceeding your expectations!

EACH NEW FOREST RIVER PURCHASE PROVIDES:

- ✓ Pre-delivery Inspection. ✓ Digital Owner's Manual.
- ✓ Free Membership to Forest River Owners Group (FROG).
Learn more at www.forestriverfrog.com.
- ✓ A Contribution to Care Camps Foundation www.carecamps.org.
- ✓ 1 Year Free Roadside Assistance from Date of Purchase.



SPEC DEFINITIONS:

Scan on your smartphone to learn RV terminology and more!



LEARN MORE:

Scan this QR code with your mobile device to learn more about Forest River.



YOUR **ENTRADA** DEALER