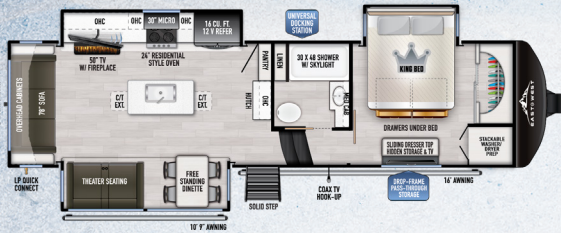


# THE AHARA FULL PROFILE FIFTH WHEEL IS THE PERFECT BLEND OF LUXURY AND VALUE.

**AHARA** is a Sanskrit term used in yoga philosophy to refer to the vehicle, or support, of consciousness and is one of the basic principles upon which health, happiness and harmony rests. The **AHARA** name perfectly embodies the spirit of this thoughtfully designed luxury fifth wheel.



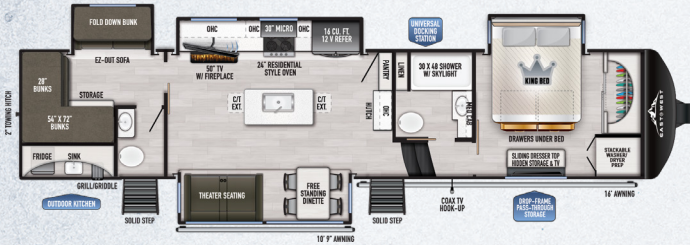
## 325RL

HITCH (LBS.): 2,185 U/VW (LBS.): 11,759 CCC (LBS.): 3,741 LENGTH: 34' 9"  
EXTERIOR HEIGHT: 13' 5" WIDTH: 102" TANKS (F/G/B): 64 / 88 / 44 AWNING: 10' 9" & 16'



## 365RL

HITCH (LBS.): 2,315 U/VW (LBS.): 12,935 CCC (LBS.): 3,321 LENGTH: 36' 11"  
EXTERIOR HEIGHT: 13' 5" WIDTH: 102" TANKS (F/G/B): 64 / 88 / 44 AWNING: 10' 9" & 18'



## 378BH-OK

HITCH (LBS.): 2,775 U/VW (LBS.): 14,785 CCC (LBS.): 3,931 LENGTH: 41' 1"  
EXTERIOR HEIGHT: 13' 5" WIDTH: 102" TANKS (F/G/B): 64 / 88 / 88 AWNING: 10' 9" & 16'



## 380FL

HITCH (LBS.): 3,320 U/VW (LBS.): 14,760 CCC (LBS.): 4,401 LENGTH: 41' 3"  
EXTERIOR HEIGHT: 13' 5" WIDTH: 102" TANKS (F/G/B): 64 / 88 / 88 AWNING: 14' & 16'



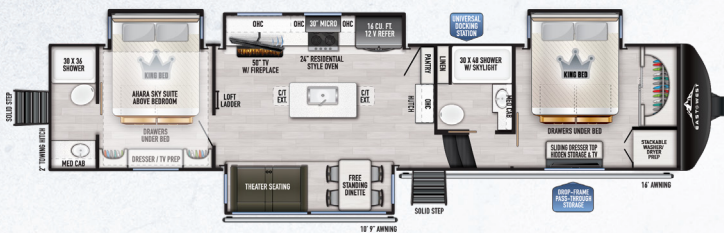
## 383UR

HITCH (LBS.): 2,670 U/VW (LBS.): 13,880 CCC (LBS.): 2,731 LENGTH: 41' 4"  
EXTERIOR HEIGHT: 13' 5" WIDTH: 102" TANKS (F/G/B): 64 / 132 / 44 AWNING: 10' 9" & 16'



## 385DS

HITCH (LBS.): 2,820 U/VW (LBS.): 14,950 CCC (LBS.): 3,811 LENGTH: 43' 9"  
EXTERIOR HEIGHT: 13' 5" WIDTH: 102" TANKS (F/G/B): 64 / 132 / 88 AWNING: 10' 9" & 16'



## 390DS

HITCH (LBS.): 3,115 U/VW (LBS.): 15,605 CCC (LBS.): 3,451 LENGTH: 42' 10"  
EXTERIOR HEIGHT: 13' 5" WIDTH: 102" TANKS (F/G/B): 64 / 132 / 88 AWNING: 10' 9" & 16'



## 395FB

HITCH (LBS.): 2,810 U/VW (LBS.): 15,735 CCC (LBS.): 3,016 LENGTH: 44' 1"  
EXTERIOR HEIGHT: 13' 5" WIDTH: 102" TANKS (F/G/B): 64 / 132 / 88 AWNING: 16' & 18'





**TRAVEL TRAILERS**



**TOY HAULERS**



**FIFTH WHEELS**



**MOTORHOMES**

**EAST TO WEST TAKES PRIDE IN OUR FIVE GUIDING PRINCIPLES AND OUR CORPORATE PHILOSOPHY**  
which focuses on people working together to create high quality, value-added products that deliver the ultimate RV experience.

**Sustainable Manufacturing**

*An important objective to our strategy and operations is to implement economically sound manufacturing processes to reduce/ recycle waste & conserve energy and natural resources.*

**Corporate & Social Responsibility**

*We foster a business environment in which we focus on and practice:*  
- Ethical Labor Practices  
- Teamwork  
- Philanthropy  
- Volunteering

**Culture & Values**

*We are a forward thinking company committed to fostering a culture of teamwork. By being transparent, we encourage our employees to think outside the box and make a difference!*

**Quality & Construction**

*Our team takes pride in each unit we build. Our manufacturing standards and point to point inspections ensure each EAST TO WEST brand is built to the same quality specifications every time.*

**Our Commitment**

*We strive to provide the highest quality products at the best possible price to our customers. We invite you to be a part of the EAST TO WEST family and we look forward to exceeding your expectations!*

**EACH NEW FOREST RIVER PURCHASE PROVIDES:**

- ✔ Pre-delivery Inspection. ✔ Digital Owner's Manual.
- ✔ Free Membership to Forest River Owners Group (FROG).  
Learn more at [www.forestriverfrog.com](http://www.forestriverfrog.com).
- ✔ A Contribution to Care Camps Foundation [www.carecamps.org](http://www.carecamps.org).
- ✔ 1 Year Free Roadside Assistance from Date of Purchase.



**LEARN MORE:**

Scan this QR code with your mobile device to learn more about Forest River.



**SPECIFICATION DEFINITIONS:**

Scan this barcode using a QR reader on your smartphone to learn RV terminology and more!



YOUR **AHARA** DEALER