



Della Terra



Della Terra

TRAVEL TRAILERS



www.easttowestrv.com/della-terra
A DIVISION OF FOREST RIVER





EXPLORE COMFORT PACKAGE (STANDARD)

48" Dinette with pull-out storage drawers on roller guides (some models) W/A*

Built-In Fireplace (251RD, 241BH, 261RB, 262BH, 263RK, 312BH)

USB Charging Stations

Washer/Dryer Prep (261RB, 262BH, 263RK, 312BH)

Residential Inspired Linoleum Flooring

Window Valance Package

3-Burner Range
(most models) (W/A*)

B/T Rechargeable Sound System
Camp Kitchen (241BH, 262BH, 312BH)

Seamless Designer Countertops

Porcelain Foot Flush Toilet

81" Interior Ceiling Height

12V Refrigerator

Solid Bedroom Door (W/A*)

Cable/Satellite Ready

35,000 BTU Furnace

Interior LED Lights

ADVENTURE OUTDOOR PACKAGE (STANDARD)

Universal Docking Station with Battery Disconnect and Slide-Out Switch

Oversized Exterior Entry Grab Handle

2nd A/C Prep (251RD and Up)

Manual Stabilizer Jacks with Electric Jack Prep

HDTV Antenna Wi-Fi Prep 4G LTE Prep

Hot and Cold Outside Shower

Tankless Water Heater with Bypass

Power Tongue Jack with LED Light

Power Awning with LED Lights

Detachable Power Cord

Backup Camera Prep

LP Quick Connect

Exterior LED Lights

Solid Entry Steps

Black Tank Flush

Tinted Windows

Solar Prep

BASE CAMP PACKAGE (STANDARD)

15,000 BTU-Ducted A/C with Quick Cool

Automotive Deposition Coated Frame

Flush-Floor Slide-Outs (No Carpet)

Upgraded Interior Design Package

Magnetic Baggage Door Catches

Heated and Enclosed Underbelly

D-Ring for Dog Leashes

Forced Air Heated and Enclosed Holding Tanks

King Bed

AVAILABLE OPTIONS

Electric Power Stabilizer Jacks

LED Smart TV with Swingout Bracket (W/A)*

200 Watt Solar Package with 30 Amp Controller

2nd A/C (251RD, 261RB, 262BH, 263RK, 272RL, 312BH)

Tri-Fold Sofa IPO Jackknife Sofa (251RD, 261RB, 262BH, 263RK, 272RL, 312BH)

Theater Seating IPO Jackknife Sofa (200RD, 221ML, 251RD, 261RB, 262BH, 263RK, 272RL, 312BH)

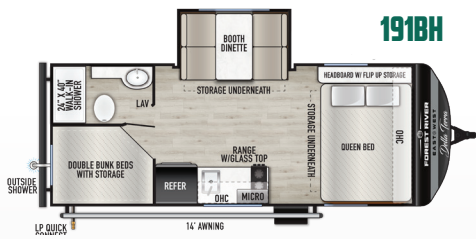
Free Standing Dinette IPO Booth (W/A)*

Spare Tire and Carrier

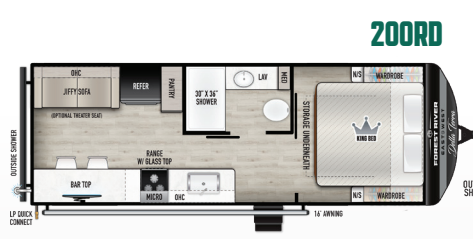
Aluminum Wheels

Queen Bed

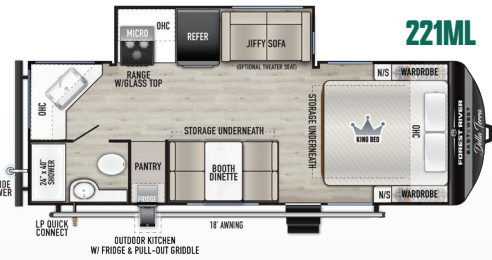
*WHERE APPLICABLE



Hitch (LBS): **550** Ext. Length: **24'4"** Ext. Height: **10'10"**
 Ext.Width: **96"** UVW (LBS): **4,910**
 CCC (LBS): **2,640** Tanks - F/B/G - (GAL): **40/30/30**



Hitch (LBS): **635** Ext. Length: **28'2"** Ext. Height: **11'3"**
 Ext.Width: **96"** UVW (LBS): **4,998 lb**
 CCC (LBS): **2,637** Tanks - F/B/G - (GAL): **40/30/30**



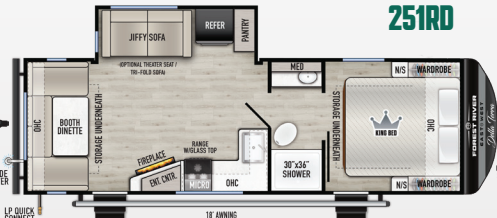
Hitch (LBS): **670** Ext. Length: **27'4"** Ext. Height: **11'3"**
 Ext.Width: **96"** UVW (LBS): **6,323 lb**
 CCC (LBS): **3,147** Tanks - F/B/G - (GAL): **40/30/30**



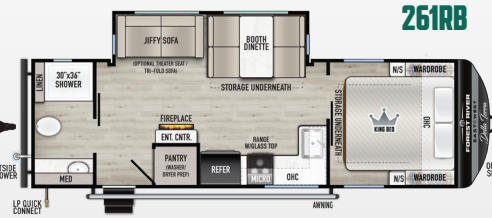
Hitch (LBS): **645** Ext. Length: **29'11"** Ext. Height: **11'3"**
 Ext.Width: **96"** UVW (LBS): **6,118**
 CCC (LBS): **3,327** Tanks - F/B/G - (GAL): **40/30/60**



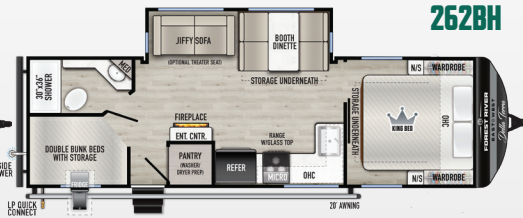
Hitch (LBS): **730** Ext. Length: **30'9"** Ext. Height: **11'3"**
 Ext.Width: **96"** UVW (LBS): **5,448**
 CCC (LBS): **2,282** Tanks - F/B/G - (GAL): **40/30/60**



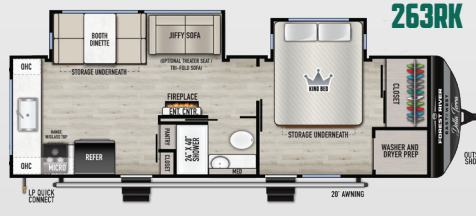
Hitch (LBS): **635** Ext. Length: **29'10"** Ext. Height: **11'3"**
 Ext.Width: **96"** UVW (LBS): **6,288**
 CCC (LBS): **3,147** Tanks - F/B/G - (GAL): **40/30/60**



Hitch (LBS): **775** Ext. Length: **30'6"** Ext. Height: **11'3"**
 Ext.Width: **96"** UVW (LBS): **6,473**
 CCC (LBS): **3,102** Tanks - F/B/G - (GAL): **40/30/60**



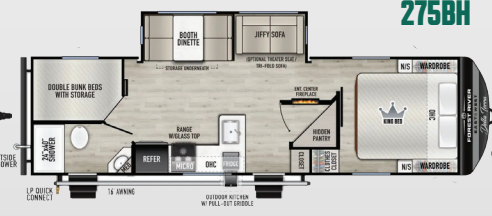
Hitch (LBS): **820** Ext. Length: **31'11"** Ext. Height: **11'3"**
 Ext.Width: **96"** UVW (LBS): **7,043**
 CCC (LBS): **2,577** Tanks - F/B/G - (GAL): **40/30/60**



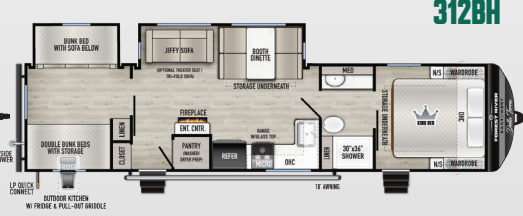
Hitch (LBS): **780** Ext. Length: **31'10"** Ext. Height: **11'3"**
 Ext.Width: **96"** UVW (LBS): **7,243**
 CCC (LBS): **2,337** Tanks - F/B/G - (GAL): **40/30/90**



Hitch (LBS): **835** Ext. Length: **34'0"** Ext. Height: **11'3"**
 Ext.Width: **96"** UVW (LBS): **7,963**
 CCC (LBS): **1,672** Tanks - F/B/G - (GAL): **40/30/60**



Hitch (LBS): **TBD** Ext. Length: **32'7"** Ext. Height: **TBD**
 Ext.Width: **96"** UVW (LBS): **6,798**
 CCC (LBS): **2,952** Tanks - F/B/G - (GAL): **40/30/60**



Hitch (LBS): **935** Ext. Length: **38'0"** Ext. Height: **11'3"**
 Ext.Width: **96"** UVW (LBS): **8,623**
 CCC (LBS): **2,712** Tanks - F/B/G - (GAL): **40/30/60**

DELLA TERRA LE VALUE PACKAGE

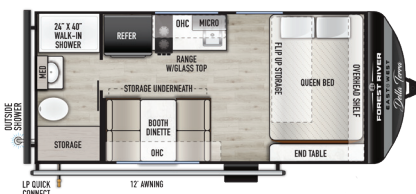
On-the-Go Ladder Prep
 Slide-Out Awning Prep
 Cable/Satellite Ready
 Friction Hinged
 Entry Doors
 Motion Sensor
 Lights (W/A)
 19,000 BTU Furnace
 Shower Surround
 8,000 BTU A/C
 2 Burner Stove
 Black Tank Flush
 CPAP Storage

USB Charging Stations (Beds, Bunks & Tables)*
 Roof-Mounted Solar Prep with Controller Pre-Wire
 Power Awning with Adjustable Legs
 Exterior LED Light Strip Under Awning
 Seamless Countertops (No T-Mold)
 Back Up Camera Prep
 Outside Hot/Cold Shower
 81" Interior Ceiling Height

LE AVAILABLE OPTIONS

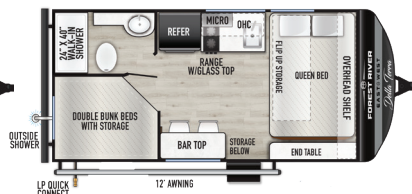
Spare Tire and Carrier
 200 Watt Solar Package with 30 Amp Controller

160RBXLE



Hitch (LBS): **340** Ext. Length: **21'0"**
 Ext. Height: **10'3"** Ext.Width: **96"** UVW (LBS): **3,518**
 CCC (LBS): **1,222** Tanks - F/B/G - (GAL): **40/30/30**

170HBXLE



Hitch (LBS): **385** Ext. Length: **21'0"**
 Ext. Height: **10'3"** Ext.Width: **96"** UVW (LBS): **3,513**
 CCC (LBS): **1,272** Tanks - F/B/G - (GAL): **40/30/30**

165 BXHLE



Hitch (LBS): **TBD** Ext. Length: **TBD**
 Ext. Height: **TBD** Ext.Width: **TBD** UVW (LBS): **TBD**
 CCC (LBS): **TBD** Tanks - F/B/G - (GAL): **TBD**



TRAVEL TRAILERS



TOY HAULERS



FIFTH WHEELS



MOTORHOMES

EAST TO WEST TAKES PRIDE IN OUR FIVE GUIDING PRINCIPLES AND OUR CORPORATE PHILOSOPHY
which focuses on people working together to create high quality, value-added products that deliver the ultimate RV experience.

Sustainable Manufacturing

An important objective to our strategy and operations is to implement economically sound manufacturing processes to reduce/recycle waste & conserve energy and natural resources.

Corporate & Social Responsibility

We foster a business environment in which we focus on and practice:

- Ethical Labor Practices
- Teamwork
- Philanthropy
- Volunteering

Culture & Values

We are a forward thinking company committed to fostering a culture of teamwork. By being transparent, we encourage our employees to think outside the box and make a difference!

Quality & Construction

Our team takes pride in each unit we build. Our manufacturing standards and point to point inspections ensure each EAST TO WEST brand is built to the same quality specifications every time.

Our Commitment

We strive to provide the highest quality products at the best possible price to our customers. We invite you to be a part of the EAST TO WEST family and we look forward to exceeding your expectations!

EACH NEW FOREST RIVER PURCHASE PROVIDES:

- ✓ Pre-delivery Inspection.
- ✓ Digital Owner's Manual.
- ✓ Free Membership to Forest River Owners Group (FROG).
Learn more at www.forestriverfrog.com.
- ✓ A Contribution to Care Camps Foundation www.carecamps.org.
- ✓ 1 Year Free Roadside Assistance from Date of Purchase.



SPEC DEFINITIONS:

Scan on your smartphone to learn RV terminology and more!



LEARN MORE:

Scan this QR code with your mobile device to learn more about Forest River.



YOUR **DELLA TERRA** DEALER