



Entrada

CLASS C MOTORHOMES



JOURNEY INTO UNEXPLORED TERRITORY



FOREST RIVER

EASTTOWESTRV.COM

ENTRADA CLASS C MOTORHOMES

FORD E-350 | FORD E-450 | CHEVY 3500 | MERCEDES M CLASS



Entrada, bringing you a Class C Motorhome tastefully designed and built with unparalleled attention to detail all at an affordable price. Entrada will sweep you off your feet with it's refreshing, light, bright interiors loaded with amenities campers love. Whether it's a quick weekend trip for two or a long family vacation...Entrada has the floor plan for you!



**SCAN TO VIEW PRICING AND
MORE INFORMATION OR VISIT:**

WWW.EASTTOWESTRV.COM/ENTRADA





KEY FEATURES

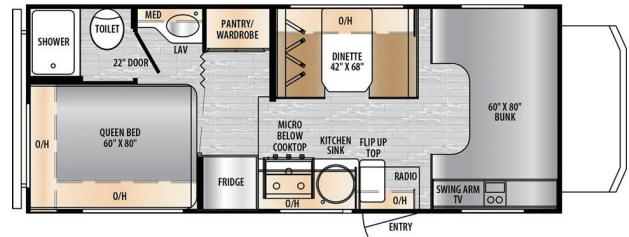
- Azdel Composite Sidewall and Slide Box Construction
- 15,000 BTU Soft Start Ducted A/C with Heat Pump
- One-Piece Automotive Painted Fiberglass Front Cap
- 50 Amp Service *(Select Models)*
- TPO Roof Membrane with Limited Lifetime Warranty
- 30,000 BTU Furnace
- Slam Latch Baggage Doors
- Extra Large Dinette Storage Drawers
- Cross Ventilation Windows in Bunk Over Cab
- High Altitude Tankless Water Heater
- 12V USB Charge Ports
- Slide Out Toppers
- Soft Close Drawers and Cabinets
- Ventless Floors
- Integrated Entry Step
- Outdoor Shower
- Apple Carplay/Android Auto Ready

FORD E-350 CHASSIS

6-speed Ford TorqShift Automatic Transmission,
325 HP w/450 lb-ft of torque, 7.3L V8 Engine

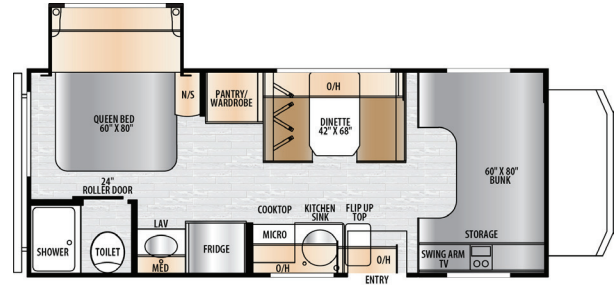
2000NS 30 AMP

GVWR: 12,500 lb
GCWR: 8,500 lb
Wheelbase: 158"
Exterior Length: 24' 5"
Tow Capacity: 5,000 lb



2200S 30 AMP

GVWR: 12,500 lb
GCWR: 8,500 lb
Wheelbase: 158"
Exterior Length: 23' 10"
Tow Capacity: 5,000 lb



2000NS



2950OK

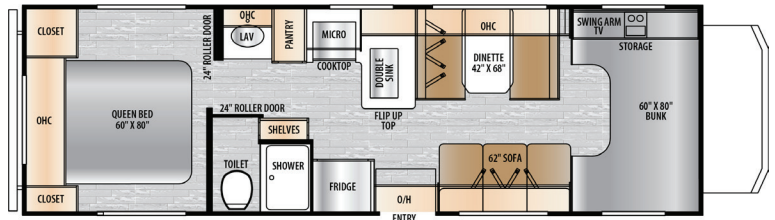


FORD E-SERIES CAB

2700NS

50 AMP

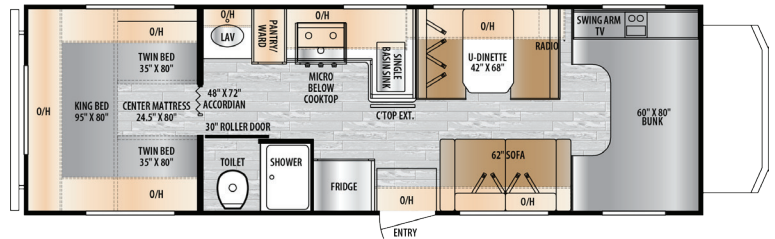
GVWR: 14,500 lb
GCWR: 22,000 lb
Wheelbase: 190"
Exterior Length: 29' 11"
Tow Capacity: 7,500 lb



2710NK

50 AMP

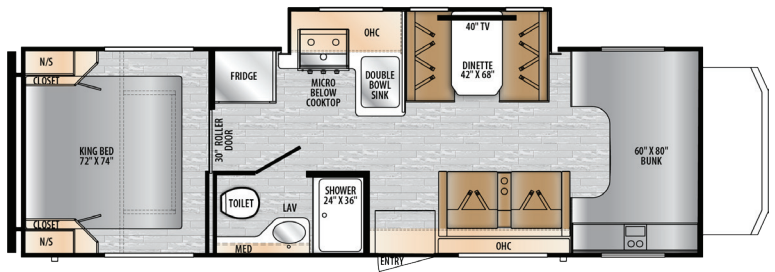
GVWR: 12,500 lb
GCWR: 22,000 lb
Wheelbase: 190"
Exterior Length: 29' 11"
Tow Capacity: 7,500 lb



2800S

50 AMP

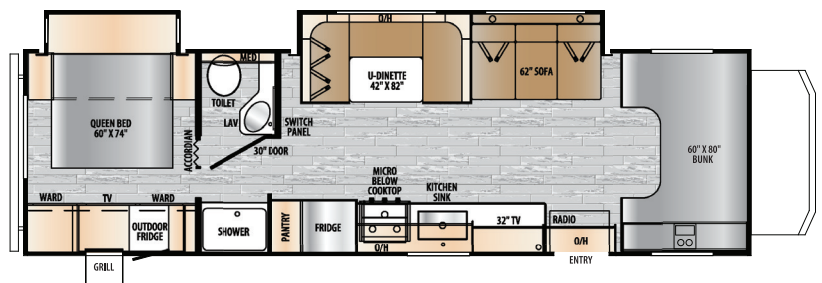
GVWR: 14,500 lb
GCWR: 22,000 lb
Wheelbase: 190"
Exterior Length: 29' 11"
Tow Capacity: 7,500 lb



29500K

50 AMP

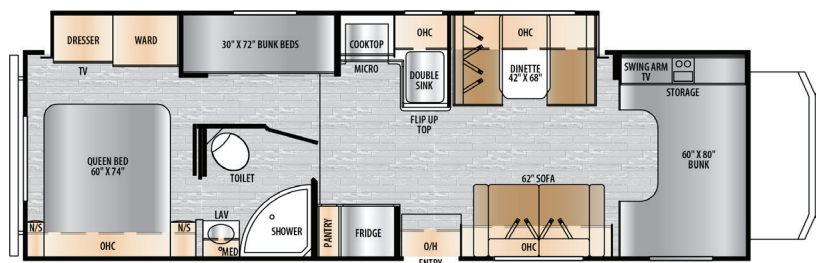
GVWR: 14,500 lb
GCWR: 22,000 lb
Wheelbase: 220"
Exterior Length: 32' 3"
Tow Capacity: 7,500 lb



3100FB

50 AMP

GVWR: 14,500 lb
GCWR: 22,000 lb
Wheelbase: 220"
Exterior Length: 32' 6"
Tow Capacity: 7,500 lb

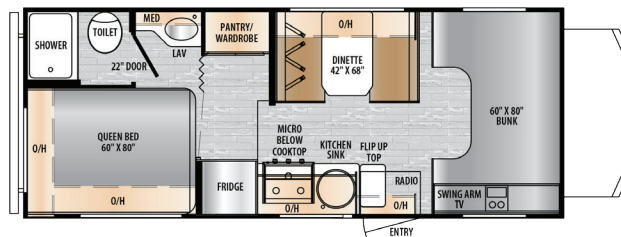


CHEVY 3500 CHASSIS

6-speed Automatic Transmission,
404 HP with 464 lb-ft of Torque, 6.6L V8 Engine

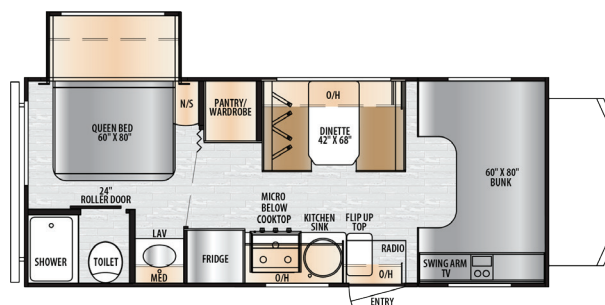
210NS 30 AMP

GVWR: 12,300 lb
GCWR: 20,000 lb
Wheelbase: 159"
Exterior Length: 24' 5"
Tow Capacity: 5,000 lb



220SC 30 AMP

GVWR: 12,300 lb
GCWR: 20,000 lb
Wheelbase: 159"
Exterior Length: 23' 10"
Tow Capacity: 5,000 lb

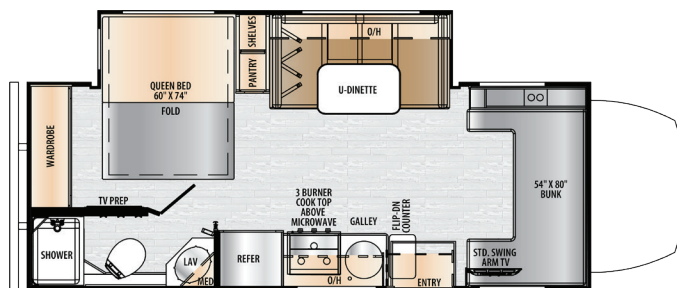


MERCEDES M CLASS CHASSIS

9-speed Automatic Transmission, 208 HP w/332 lb-ft of torque, 2.0L Four-Cylinder Turbo Diesel Engine

24FM 30 AMP

GVWR: 11,030 lb
GCWR: 15,250 lb
Wheelbase: 171"
Exterior Length: 25' 5"
Tow Capacity: 5,000 lb



ENTRADA SPECS, STANDARDS & OPTIONS

Floorplan	Length	Height	Width	GVWR	GCWR	GAWRF (Front)	GAWRR (Rear)	Awning	Fresh Water	Gray Water	Black Water
FORD E-350 CHASSIS											
2000NS	23' 10"	10' 11"	101"	12,500 lb	4,468 lb	5,000 lb	8,500 lb	15' 6"	35 Gal	39 Gal	39 Gal
2200S	25' 11"	10' 11"	101"	12,500 lb	4,810 lb	5,000 lb	8,500 lb	14'	35 Gal	32 Gal	27 Gal
FORD E-450 CHASSIS											
2700NS	25' 11"	10' 11"	101"	14,500 lb	4,667 lb	5,000 lb	9,600 lb	20'	35 Gal	32 Gal	32 Gal
2710NK	25' 10"	10' 11"	101"	12,500 lb	5,000 lb	5,000 lb	8,500 lb	20'	35 Gal	32 Gal	32 Gal
2800S	25' 10"	10' 11"	101"	14,500 lb	5,252 lb	5,000 lb	9,600 lb	15' 6"	35 Gal	28 Gal	28 Gal
2950OK	25' 10"	10' 11"	101"	14,500 lb	5,112 lb	5,000 lb	9,600 lb	16'	35 Gal	32 Gal	32 Gal
3100FB	25' 11"	10' 11"	101"	14,500 lb	5,340 lb	5,000 lb	9,600 lb	16'	35 Gal	39 Gal	39 Gal
CHEVY 3500 CHASSIS											
210NS	24' 5"	11' 3"	101"	12,300 lb	3,877 lb	4,300 lb	8,600 lb	15' 6"	35 Gal	39 Gal	39 Gal
220SC	23' 10"	11' 3"	101"	12,300 lb	4,439 lb	4,300 lb	8,600 lb	14'	35 Gal	32 Gal	27 Gal
MERCEDES M CLASS CHASSIS											
24FM	25' 5"	11' 3"	95"	11,030 lb	15,250 lb	4,410 lb	7,720 lb	16'	35 Gal	32 Gal	32 Gal

VALUE PACKAGE

- Black Tank Flush
- 12V Tank Heater
- 40" 12V Smart LED TV
- 10.7 cu ft 12V Refrigerator
- Power Awning w/LED Strip
- Backup and Side View Cameras with Monitor
- One Piece Wraparound Automotive Painted Fiberglass Front Cap
- Apple Carplay/Android Auto Ready

CHASSIS

- **Ford E-350 & Ford E-450:**
 - 7.3 L V8 Gas Engine
 - **Tow Capacity:**
 - **E-350:** 5,000 LBs
 - **E-450:** 7,500 LBs
 - 325 Horsepower
 - 450 lb-ft Torque
- **Chevy 3500 Chassis:**
 - 6.6 L V8 Gas Engine
 - **Tow Capacity:** 5,000 LBs
 - 401 Horsepower
 - 464 lb-ft Torque

- **Mercedes 3500 Chassis:**
 - 2.0 L V4 Turbo Diesel Engine
 - **Tow Capacity:** 5,000 LBs
 - 208 Horsepower
 - 325 lb-ft Torque
 - Apple Carplay/Android Auto Ready

EXTERIOR

- Azdel Composite Wall Construction
- TPO Roof Membrane w/ Limited Lifetime Warranty
- Rotocast Exterior Storage
- Slam Latch Doors
- Slide Out Toppers
- LP Quick Connect
- Solar Prep
- Exterior Spray Port
- Inverter Prep
- GFI Plug Loop
- Integrated Entry Step

INTERIOR

- Azdel Composite Wall Cross Ventilation Side Windows in Bunk
- XL Dinette Drawer
- 60" x 80" Bunk over Cab

- Convection Oven w/ Air Fry Technology
- Soft Close Hardwood Cabinet Doors and Drawers
- Extended Countertop
- 12V USB Ports
- Flush Floor Construction (*Excluding 2800S*)
- Stainless Steel Kitchen Sink w/ Cover for Extra Counter Space
- Foot Flush Porcelain Toilet
- Anti-Microbial Shower Slide
- Bathroom Towel Hooks
- King Bed (*2800S*)
- Twin/King Conversion Bed (*2710NK*)
- Queen Bed (*210NS, 220S, 2000NS, 2200S, 2700NS, 2950OK, 3100FB*)

UTILITIES

- 4,000-Watt Onboard Generator (*24FM*)
- 4,500-Watt Onboard Generator (*210NS, 220S, 2000NS, 2200S*)
- 6,000-Watt Onboard Generator (*2700NS, 2710NK, 2800S, 2950OK, 3100FB*)

- 30 Amp Service (*210NS, 220S, 2000NS, 2200S*)
- 50 Amp Service (*2700NS, 2710NK, 2800S, 2950OK, 3100FB*)
- 30,000 BTU Furnace
- 15,000 BTU Soft Start Ducted A/C with Heat Pump
- 13,500 BTU Secondary A/C (*Available on 6000-Watt, 50 Amp Floorplans*)
- High Altitude Tankless Water Heater

OPTIONS

- Automatic Hydraulic Leveling Jacks
- Powered Premium Theater Seats
- Roof-Mounted 200-Watt Solar Panel w/2nd Battery
- Driver/Passenger Swivel Seats with Boosters
- Partial Paint Package



SCAN TO LEARN RV
TERMINOLOGY OR VISIT:

FORESTRIVERINC.COM/RV-DEFINITIONS

BUILT BY LEGACY

Inspired by the Forest River family legacy, EAST TO WEST was founded in 2017 by Lisa Liegl Rees to build the next generation of RV's: High quality construction, value added brands at an affordable price. This division's collaborative and multigenerational team with industry experts helps challenge, innovate, and foster the true investment in giving our customers the best RV experience. We take pride in our craftsmanship from concept to completion by offering limited floorplans with standard features. Our ever-growing product line of brands are each artfully designed and named with meaning.



3000 County Road 6 W
Elkhart, IN 46514

574.264.6664



EACH NEW FOREST RIVER PURCHASE PROVIDES:

- ✓ Pre-delivery Inspection.
- ✓ Free Membership to Forest River Owners Group (FROG).
Learn more at www.forestriverfrog.com.
- ✓ A Contribution to Care Camps Foundation www.carecamps.org.
- ✓ 1 Year Free Roadside Assistance from Date of Purchase.



LEARN MORE:

Scan this QR code with your mobile device to learn more about Forest River.



SPECIFICATION DEFINITIONS:

Scan this barcode using a QR reader on your smartphone to learn RV terminology and more!



YOUR **EAST TO WEST** DEALER