

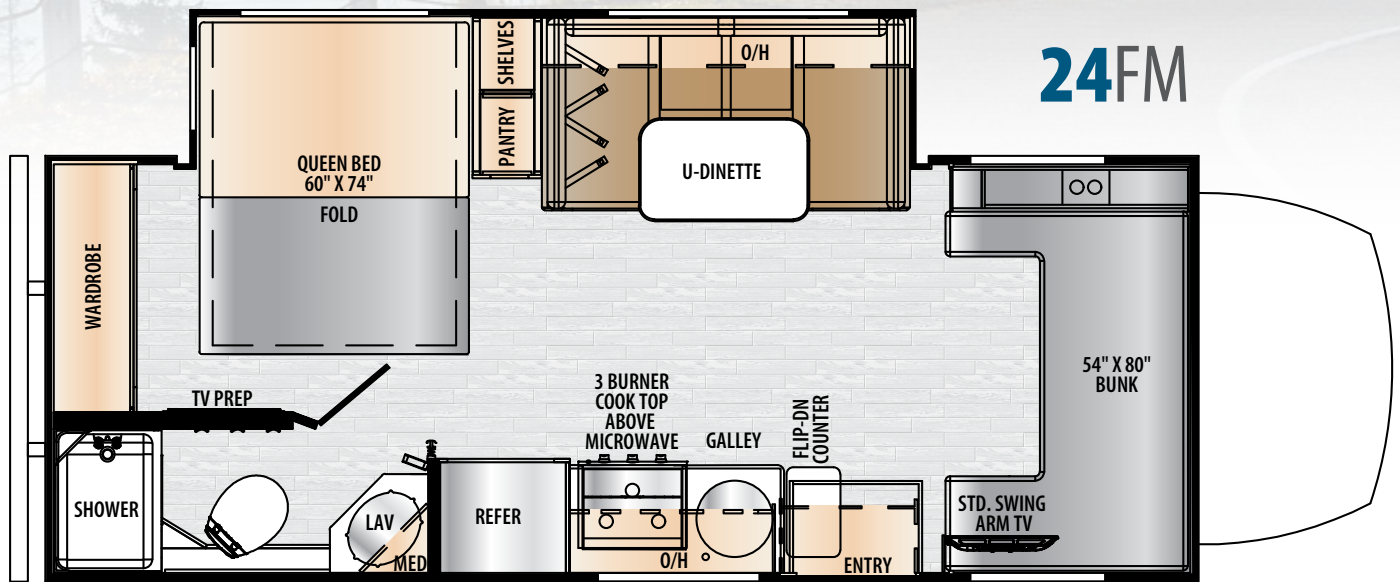


Entrada

a journey into unexplored territory

CLASS C MOTOR HOMES

NEW FLOOR PLAN!



ENTRADA SPECIFICATIONS

CLASS C GAS

24FM

ENGINE	Mercedes
WHEEL BASE	170.5"
GVWR (lbs)	11,030
GAWR (Rear)	7,720
GAWR (Front)	4,080
UVW (lbs)	TBD
GCWR (lbs)	TBD
CCC (lbs)	TBD
Fuel Capacity (gal)	26.4
Hitch Rating	5,000
Tongue Weight	500
Length Bumper to Bumper	25' 7"
Exterior Height w/A/C	11' 3"
Exterior Width	94.5"
Interior Width	91"
Interior Height	81"
Fresh Water (gal)	35
Grey Holding Tank (gal)	32
Black Holding Tank (gal)	32
LP Capacity (gal)	56
Awning Length	15' 6"
Water Heater (gal)	6
Exterior Storage (cu ft)	26

GVWR (Gross Vehicle Weight Rating) is the maximum permissible weight of the unit when fully loaded. It includes all weights, inclusive of all fluids, occupants, cargo, optional equipment and accessories. For safety and product performance do NOT exceed the GVWR.

GCWR (Gross Combined Weight Rating) is the maximum permissible loaded weight of your motor home and any towed trailer or towed vehicle. Actual GCWR of this vehicle may be limited by the sum of the GVWR and the installed hitch receiver maximum capacity rating; see hitch rating label for detail.

GAWR (Gross Axle Weight Rating) is the maximum permissible weight, including cargo, fluids, optional equipment and accessories that can be safely supported by each axle.

UVW (Unloaded Vehicle Weight)* is the typical weight of the unit as manufactured at the factory. It includes all weight at the unit's axle(s), including full fuel, all fluids and LP Gas. The UVW does not include cargo, fresh potable water, additional optional equipment or dealer installed accessories.

*Estimated Average based on standard build optional equipment.

CCC (Cargo Carrying Capacity)** is the amount of weight available for fresh potable water, cargo, passengers, additional optional equipment and accessories. CCC is equal to GVWR minus UVW. Available CCC should accommodate fresh potable water (8.3 lbs per gallon). Before filling the fresh water tank, empty the black and gray tanks to provide for more cargo capacity.

** Estimated average based on standard build optional equipment

Each Forest River motorhome is weighed at the manufacturing facility prior to shipping. A label identifying the unloaded vehicle weight of the actual unit and the cargo carrying capacity is applied to every Forest River motorhome prior to leaving our facilities.

The load capacity of your unit is designated by weight, not by volume, so you cannot necessarily use all available space when loading your unit.

Actual towing capacity is dependent upon your particular loading and towing circumstances, which includes the GVWR, GAWR and GCWR as well as adequate trailer brakes. Please refer to the Operator's Manual of your vehicle for further towing information.

All information contained in this brochure is believed to be accurate at the time of publication. However, during the model year, it may be necessary to make revisions and Forest River reserves the right to make all such changes without notice, including prices, colors, materials, equipment and specifications as well as the addition of new models and the discontinuance of models shown in this brochure. Therefore, please consult with your Forest River dealer and confirm the existence of any materials, design or specifications that are material to your purchase decision.

YOUR *Entrada* DEALER

CUSTOMER SATISFACTION



www.ForestRiverBuyLocal.com

FREE MEMBERSHIP
to Forest River Owners' Group

www.forestriverfrog.com



24/7 EMERGENCY ROADSIDE ASSISTANCE WITH VEHICLE PURCHASE*

TOWING
JUMP-STARTS
TIRE CHANGES
FLUID DELIVERY
LOCKOUT
SERVICE

WINCH-OUT
MOBILE MECHANIC
TECHNICAL
SUPPORT
DEALER LOCATOR
SERVICES



*VALID FOR 1 YEAR FROM DATE OF PURCHASE

EAST TO WEST takes pride in our five guiding principles and our corporate philosophy, which focuses on people working together to create high quality, value-added products that deliver the ultimate RV experience!



@easttowestr



EAST TO WEST RV

SUSTAINABLE MANUFACTURING

An important objective to strategy and operations is to implement economically sound manufacturing processes to reduce, recycle waste & conserve energy and natural resources.

CORPORATE & SOCIAL RESPONSIBILITY

We foster a business environment in which we focus on and practice:

- Teamwork
- Philanthropy
- Volunteering

CULTURE & VALUES

We are a forward thinking company committed to fostering a culture of teamwork. By being transparent, we encourage our employees to think outside the box and make a difference!

QUALITY & CONSTRUCTION

Our team takes pride in each unit we build. Our manufacturing standards and point-to-point inspections ensure each EAST TO WEST brand is built to the same quality specifications every time.

OUR COMMITMENT

We strive to provide the highest quality products at the best possible price to our customers. We invite you to be a part of the EAST TO WEST family and we look forward to exceeding your expectations!



Learn More
Scan this barcode using a QR Reader on your smart phone to learn more about Forest River.



A Berkshire Hathaway company.

3000 CR 6 W | ELKHART, IN 46514 | 574.264.6664 | www.EASTTOWESTRV.com

© 2022 East to West, Inc. a Division of Forest River, Inc., a Berkshire Hathaway Company. All Rights Reserved.

All information contained in this brochure is believed to be accurate at the time of publication. However, during the model year, it may be necessary to make revisions and Forest River, Inc., reserves the right to make all such changes without notice, including prices, colors, materials, equipment and specifications as well as the addition of new models and the discontinuance of models shown in this brochure. Therefore, please consult with your Forest River, Inc., dealer and confirm the existence of any materials, design or specifications that are material to your purchase decision. 07/22